



SPRING
Fever Sale

OFFERS EXPIRE 5.1.24

synchrony FINANCIAL **6 MONTHS NO INTEREST**
WITH APPROVED CREDIT

	FALL ZONE	PRICE
JUNIOR	20 X 25	\$3,425
DEFENDER	25 X 25	\$4,028
CONTENDER	25 X 30	\$4,709
DOMINATOR	30 X 30	\$5,174
COMPETITOR	30 X 45	\$7,571
SUPERIOR	30 X 50	\$7,932
GLADIATOR	30 X 60	\$10,257
PICKLEMASTER	30 X 60	\$10,257
JR. VARSITY	46 X 78	\$19,401
VARSITY	50 X 100	\$25,636
JR. TENNIS	50 X 100	\$24,392
SINGLE TENNIS	60 X 120	\$36,876
DOUBLE TENNIS	108 X 120	\$61,851

\$449*
INSTALL
ON RYVAL HOOPS
REGULARLY \$695

**FLEX COURT
INSTALLED AT**
\$.41
per sq ft.
WITH ANY
RYVAL HOOPS
**PURCHASE &
INSTALL!**

COLOR OPTIONS

Burgundy	Forest Green	Hartford Green	Rust Red	Medium Grey	Indian Beige	Light Blue	Kiwi
Navy Blue	Royal Blue	Bright Red	Black	Yellow	Purple	Orange	Silver

**DELIVERED &
INSTALLED
SAFELY AT YOUR
RESIDENCE.**

W. BELTWAY @ CLAY
4465 W. SAM HOUSTON PKWY N.
HOUSTON, TX 77041
713-690-5552

TOMBALL-WALLER
17723 FM 2920 RD.
TOMBALL, TX 77377
832-559-3088

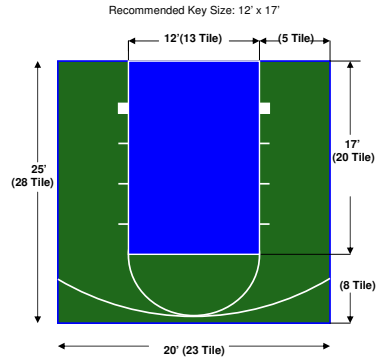
THE WOODLANDS
26314 I-45 NORTH
SPRING, TX 77386
281-367-0055

TUCSON
5128 N. CASA GRANDE HWY
TUCSON, AZ 85743
520-408-3333

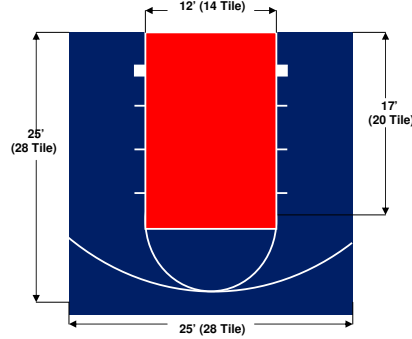
HUMBLE
2803 FM 1960 RD. E.
HUMBLE TX 77338
713- 887 -1552

GULF FREEWAY
14129 GULF FREEWAY
HOUSTON, TX 77034
281-480-0055

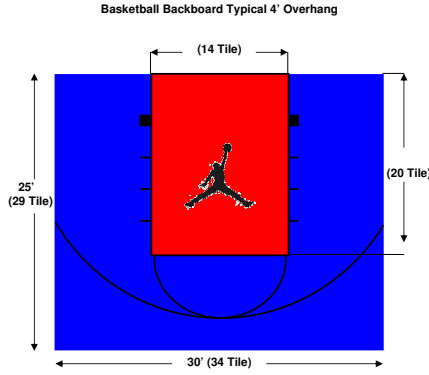
20'x 25' Court FLEX COURT® "Junior" Basketball
 (Actual Concrete Pad Size = 19'-11" x 24'-1")



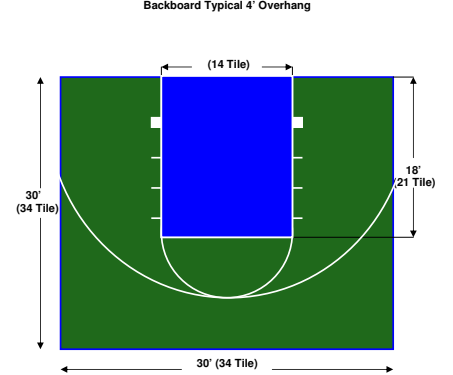
25'x 25' Defender Basketball Court
 (Concrete Pad Size = 24'-1" x 24'-1")



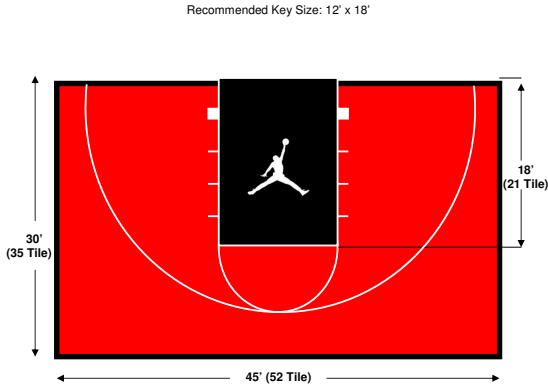
25'x 30' FLEX COURT™ Contender Court
 (Actual Concrete Pad Size = 25'-0" x 29'-2")



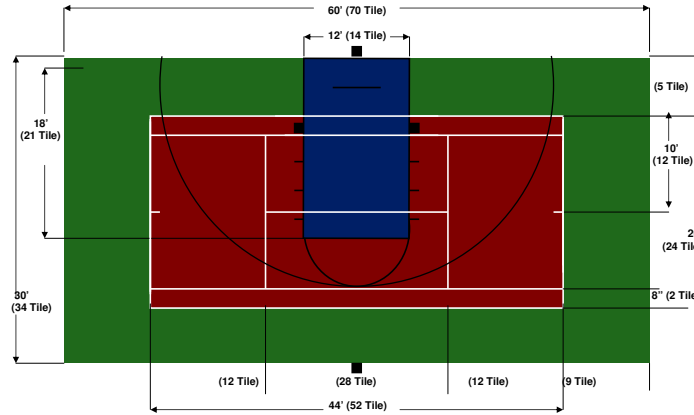
30'x 30' FLEX COURT™ Dominator Court
 (Actual Concrete Pad Size = 29'-2" L x 29'-2" W)



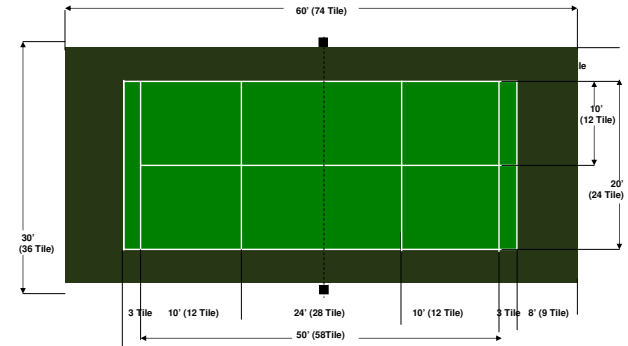
30'x 45' FLEX COURT™ Half Basketball Court
 (Actual Concrete Pad Size = 30'-0" x 44'-2")



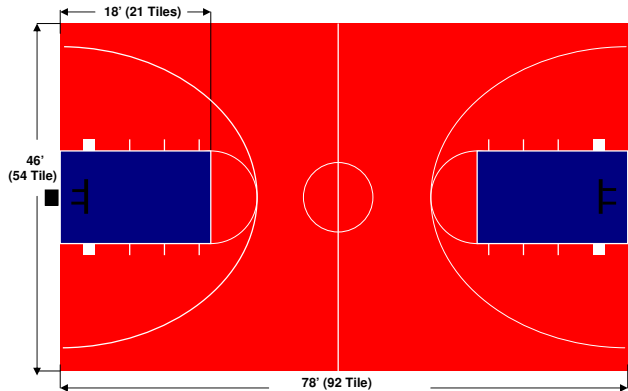
30'x 60' FLEX COURT™ Multi-Game Court
 Action Tennis / Badminton / Volleyball / Basketball
 (Actual Concrete Pad Size = 30'-0" x 60'-0")



30'x 60' FLEX COURT™ Picklemaster Court
 (Actual Concrete Pad Size = 30'-0" x 63'-10")



46' x 78' FLEX COURT® Jr Varsity Basketball Court
 (Actual Concrete Pad Size = 45'-11" x 78'-0")



30' x 50' FLEX COURT® SUPERIOR BASKETBALL COURT
 (Actual Concrete Pad Size = 30'-0" x 49'-4")

