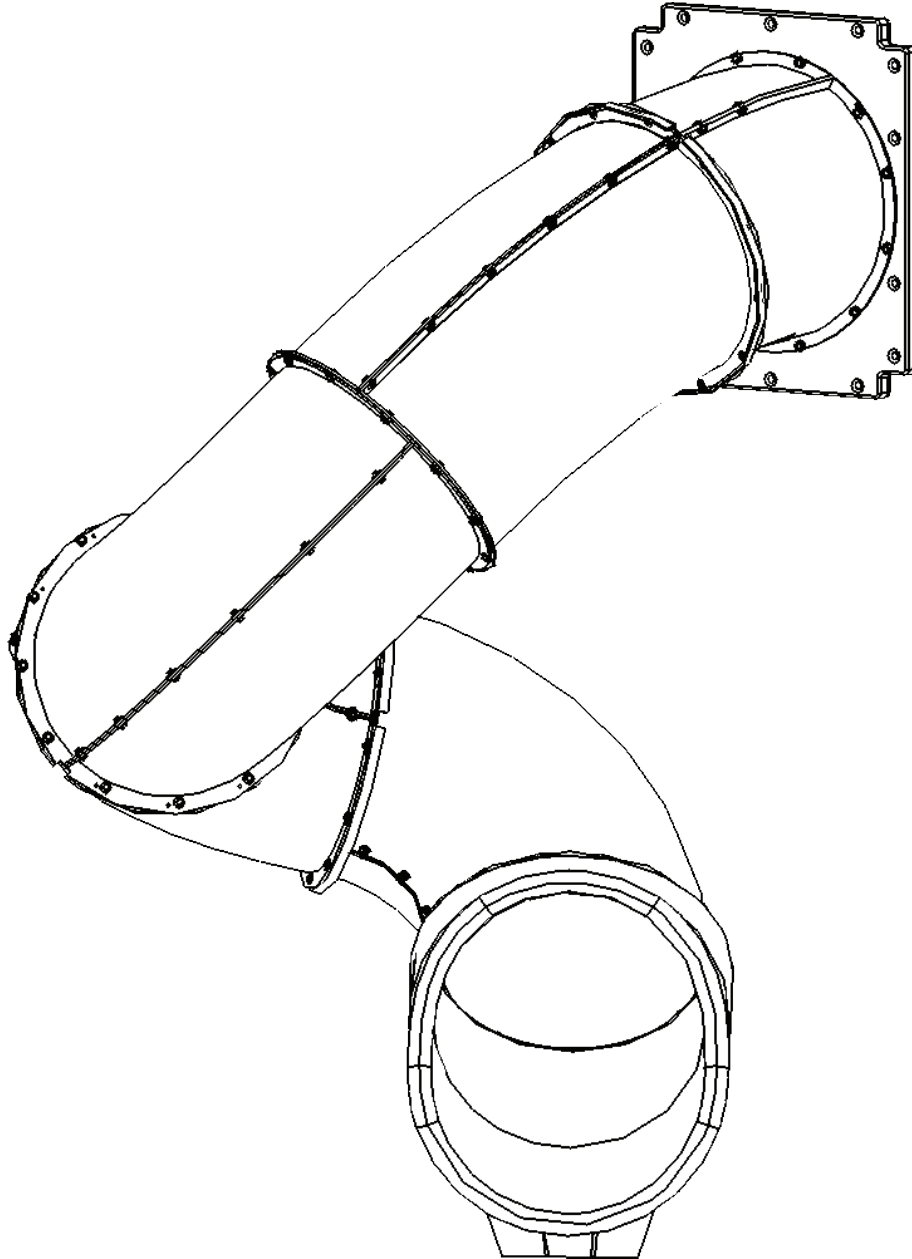


# Super 360 Spiral Slide Installation Manual



Version 1:19



4465 West Sam Houston Parkway N.  
Houston, Texas 77041  
[WWW.TREEFROGSSHOWROOMS.COM](http://WWW.TREEFROGSSHOWROOMS.COM)

© 2019 KID STRUCTURES INC.

## Sections

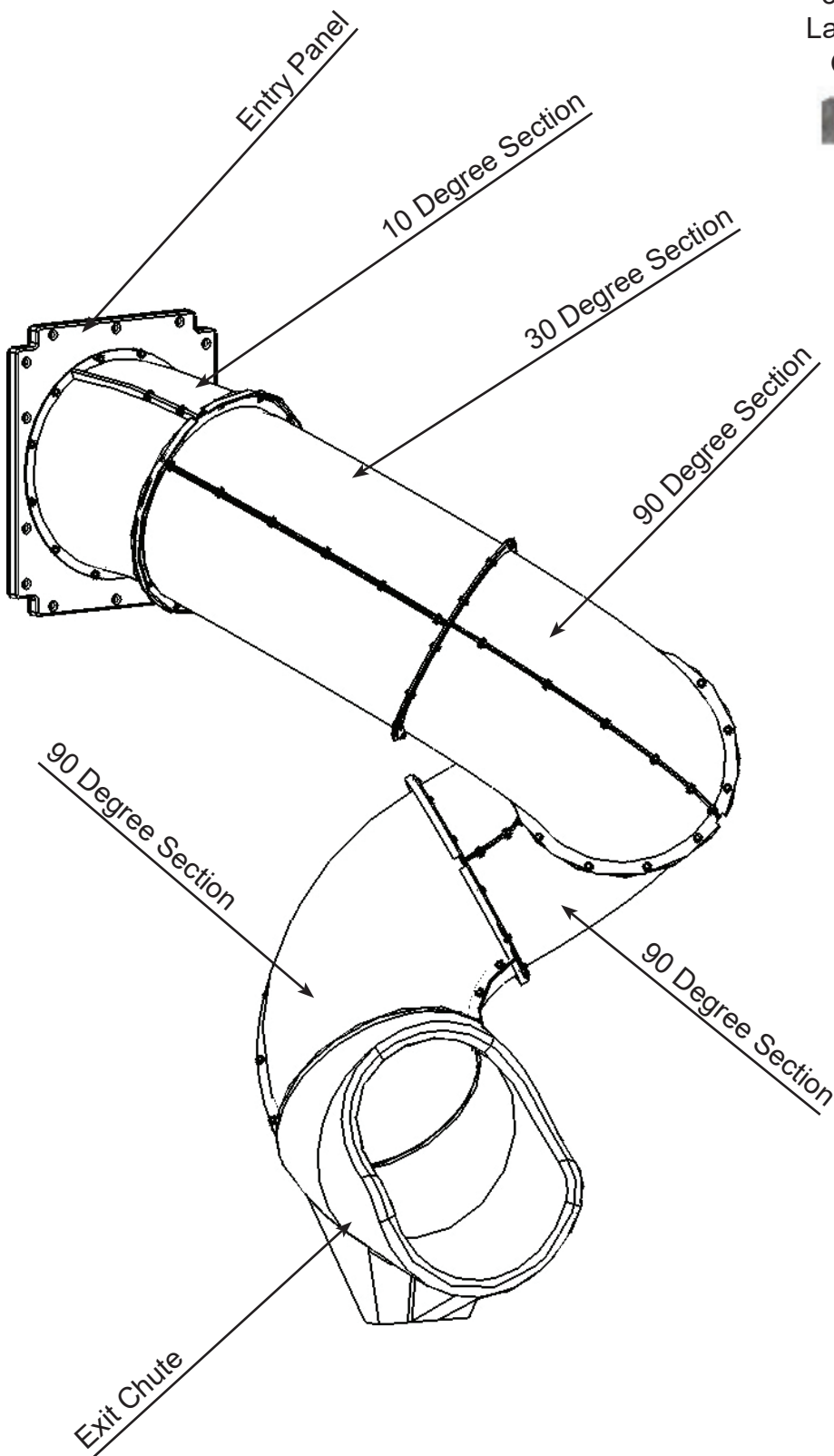
Page 1: Part List

Page 2: 5.8' Deck Height Assembly

Page 3: 5' & 7' Deck Height Assembly

Page 4: 6.5' Deck Height Assembly

**PARTS**



3/8" x 5"  
Lag Screw  
QTY. 2



5/16" x 1 1/2"  
Lag Screw  
QTY. 26



5/16" x 1"  
Hex Bolt  
QTY. 99



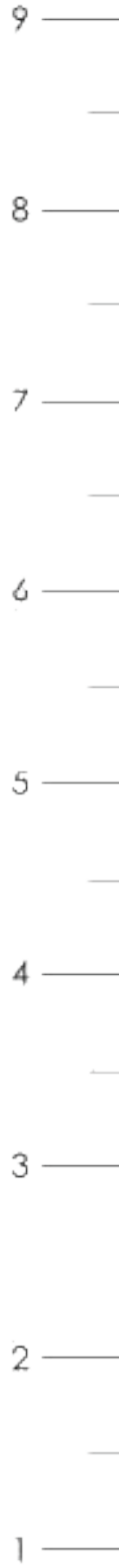
5/16"-18  
Lock Nut  
QTY. 97



5/16"  
Flatwasher  
QTY. 222

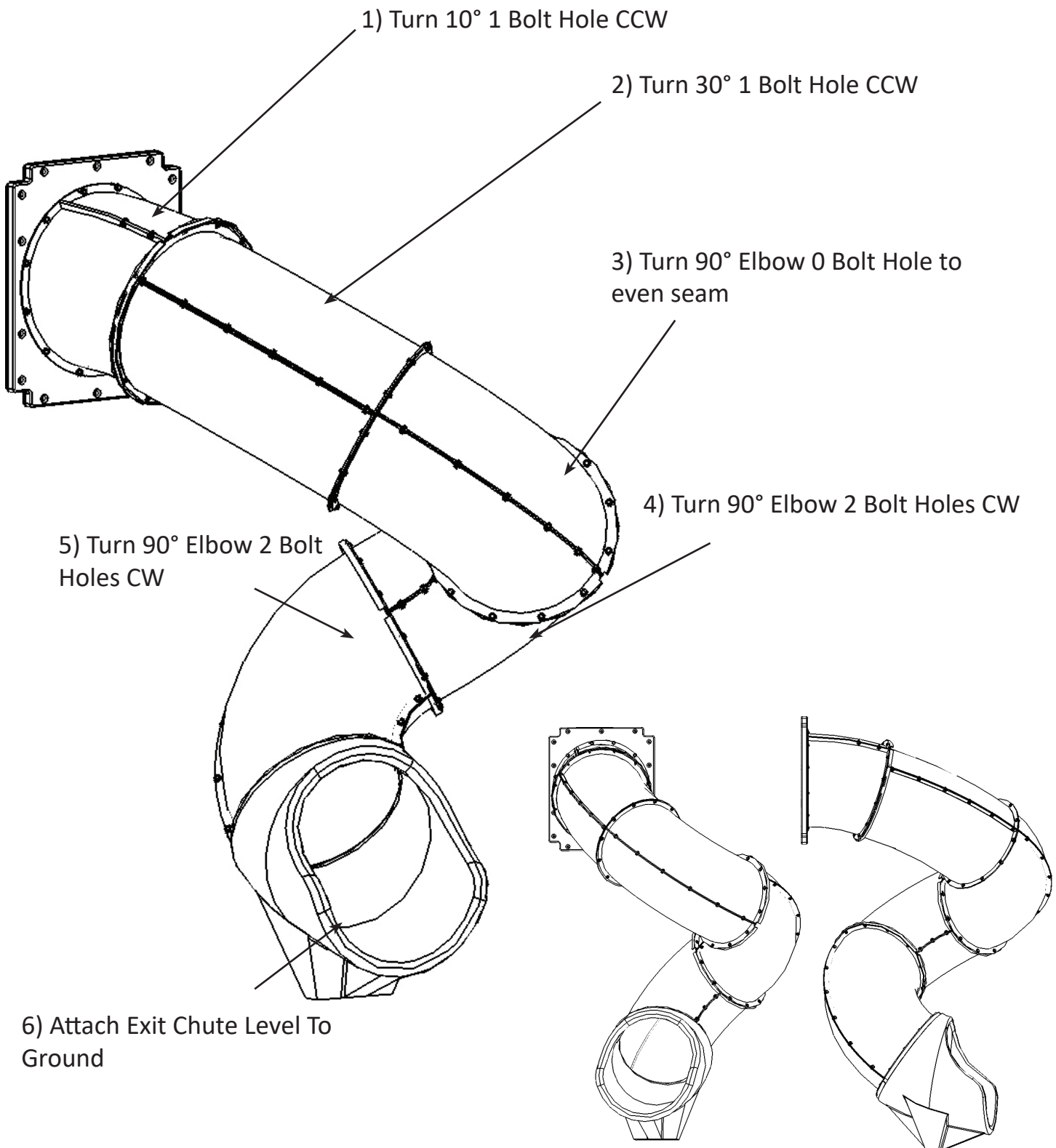


3/8"  
Flatwasher  
QTY. 2



# Quick Reference Guide #1

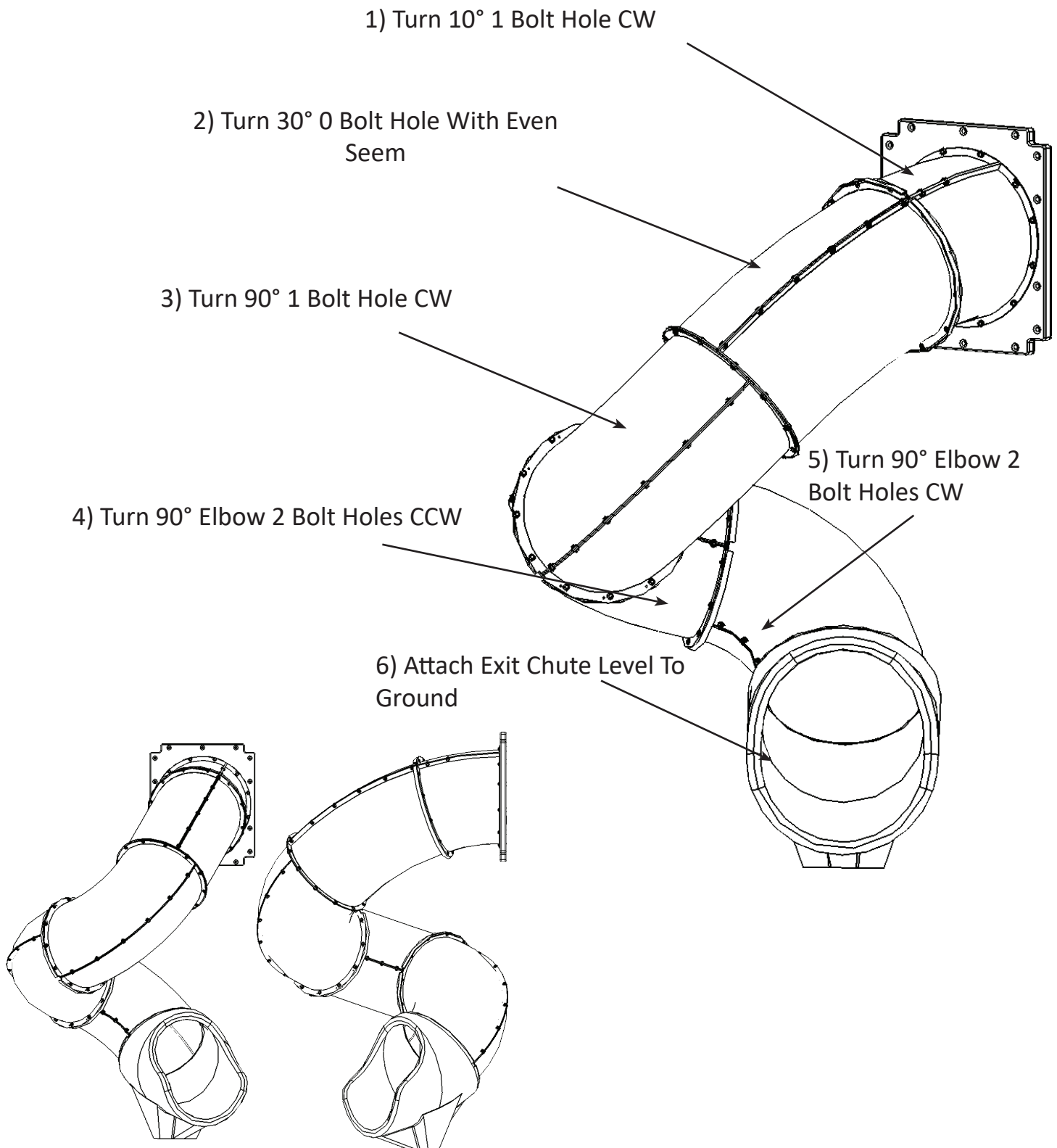
## For 5.8' Deck Height



**NOTE:** To spiral in the opposite direction, apply CW turns instead of CCW and vice versa. Turns may need to be adjusted depending on the level of the land.

## Quick Reference Guide #2

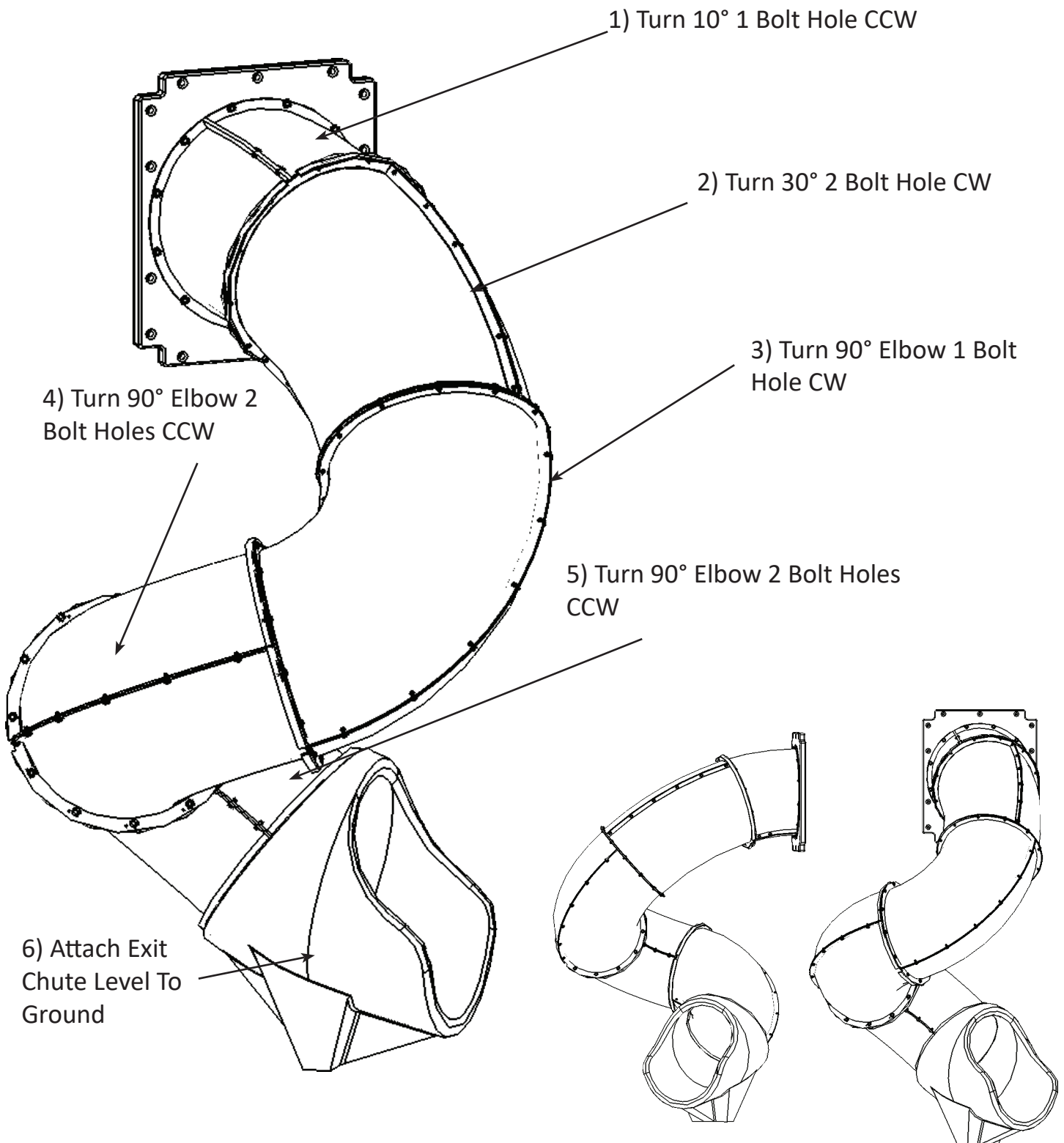
### For 5' & 7' Deck Heights



**NOTE:** To spiral in the opposite direction, apply CW turns instead of CCW and vice versa. Turns may need to be adjusted depending on the level of the land.

## Quick Reference Guide #3

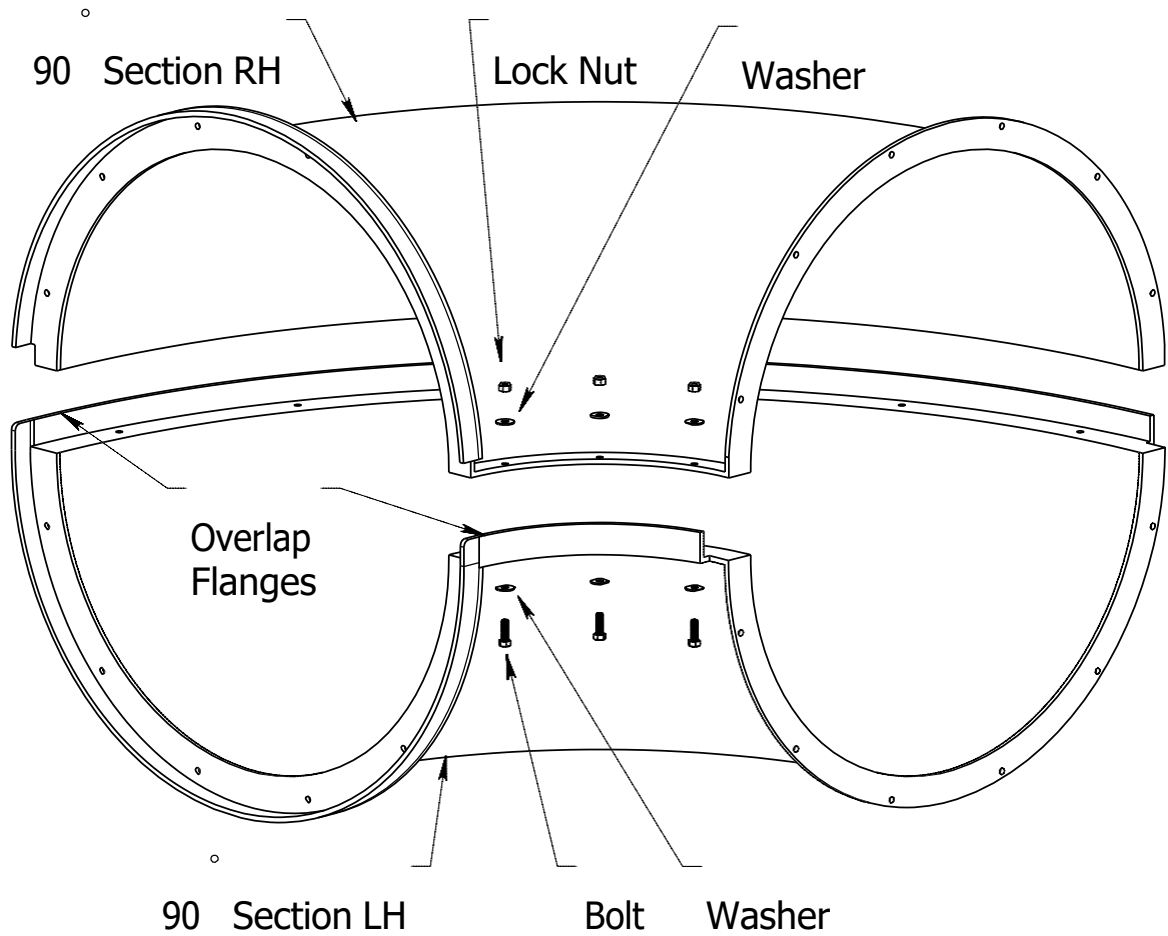
### For 6.5' Deck Height

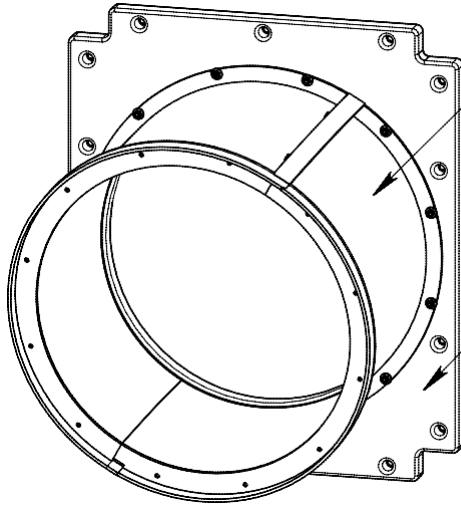


**NOTE:** To spiral in the opposite direction, apply CW turns instead of CCW and vice versa. Turns may need to be adjusted depending on the level of the land.

### Step #1

Assemble the Elbow Section Halves together with the hardware as shown.  
Note the position of the Overlap Flanges in relation to the direction of the Bolts.



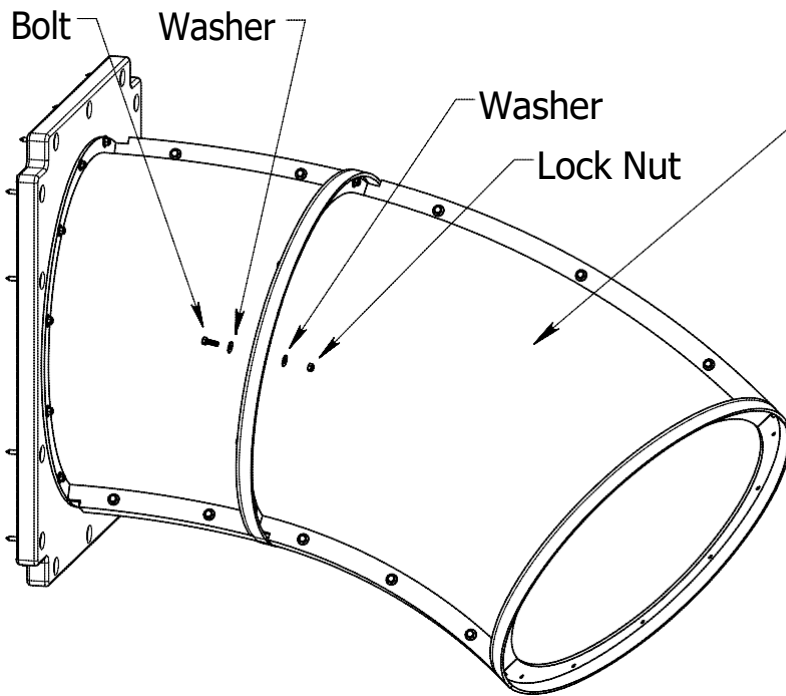


### Step #2

Using Nuts, Washers and Bolts, attach the 10 ° Elbow to Entry Panel in the "Quick Reference" orientation.

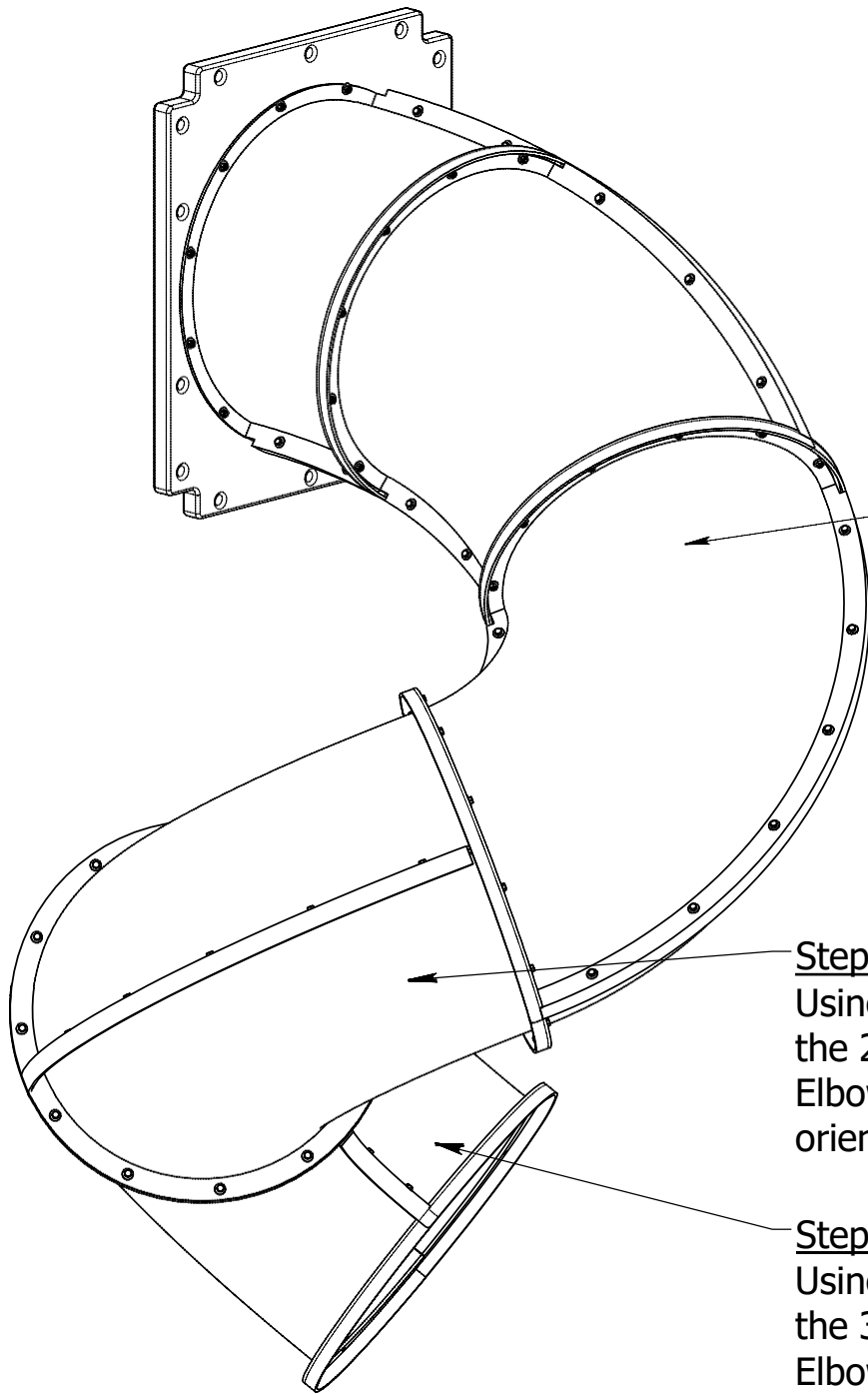
### Step #3

After properly blocking the slide entrance on the playset, attach the Entry Chute/first Elbow assembly to the playset with the Lag Screws and Washers provided.



### Step #4

Using Nuts, Washers and Bolts, attach the 30 ° Elbow to the previous Elbow in the "Quick Reference" orientation.



Step #5

Using Nuts, Washers and Bolts, attach the 90 ° Elbow to the previous Elbow in the "Quick Reference" orientation.

Step #6

Using Nuts, Washers and Bolts, attach the 2nd 90 ° Elbow to the previous Elbow in the "Quick Reference" orientation.

Step #7

Using Nuts, Washers and Bolts, attach the 3rd 90 ° Elbow to the previous Elbow in the "Quick Reference" orientation.



### Step #8

Place the end of the Exit Chute up against the last Elbow Section and make it level with the ground. If any of the last Elbow bolt holes line up with the Exit Chute attach with Bolts and Washers (possibly 2 Places). For all the holes that don't line up attach with Lag Screws and Washers. (as many as 12 places) Start each Bolt by hand before tightening. Be careful not to overtighten the Lag Screws into the soft plastic.

